

Manual Instructions M
ions Manual Instruct
Instructions Manual
Instructions Manual In
Manual Instructions M
ions Manual Instructi
Instructions Manual Ins
Manual Instructions M
ions Manual Instruct



InkZone2Optim

Content

- 1.1 System requirements3
- 1.2 Software installation3
- 1.3 Dongle installation6

- 2.1 How it works6
- 2.2 Overview7

- 3.1 Start the software7
- 3.2 Tab Convert Press8
- 3.3 Tab Convert PrePress8
- 3.4 Tab Link OUT9
- 3.5 Tab Analyze9

1.1 System requirements

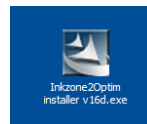
We recommend the following equipment for working with Inkzone2Optim:

- Intel Pentium IV 2.0 GHz processor
- Windows Professional 2000 / XP
- 512 MB RAM
- 100 MB free hard disk space
- CD-ROM or DVD-ROM drive
- VGA video adapter

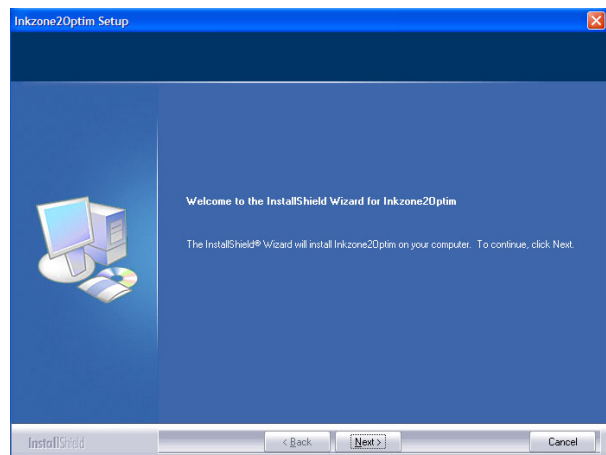
Check if there is a free USB port available for the dongle.

1.2 Software installation

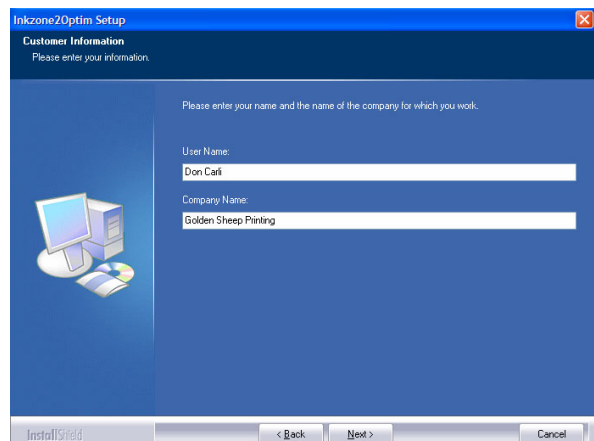
Run the Inkzone2Optim installer:



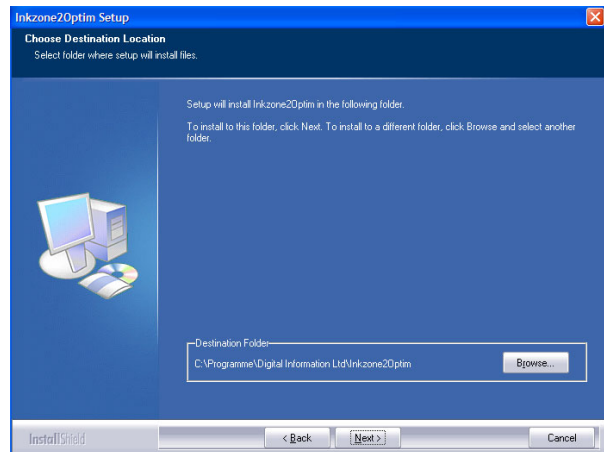
Confirm the welcome dialog by clicking on Next.



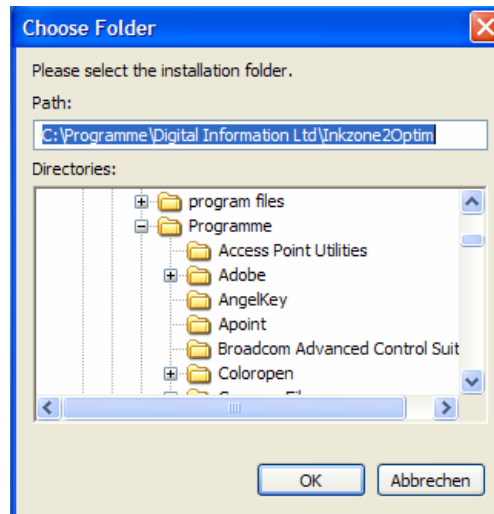
Enter the user and company information. Confirm by clicking on Next.



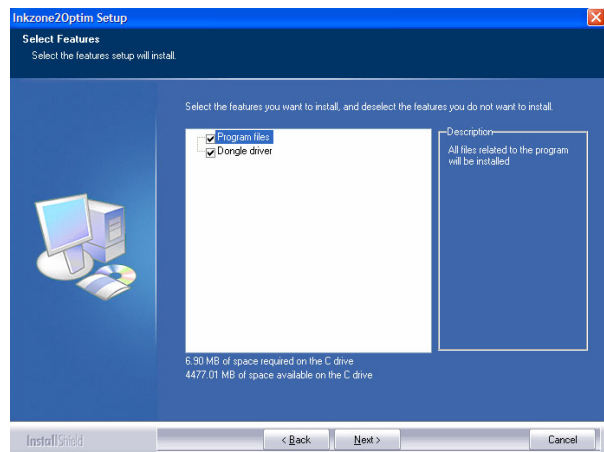
Select and installation folder for the software. The program will suggest a folder. If you like to install the software in a different folder, click on Browse otherwise select Next.



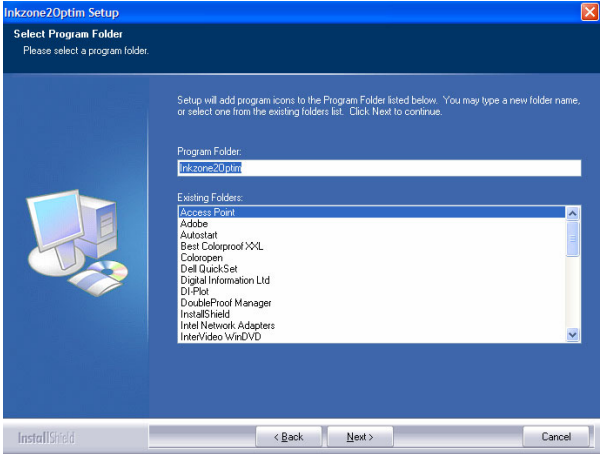
By clicking on Browse you get the “Choose Folder” dialog to select a different program folder. Select and quit with OK.



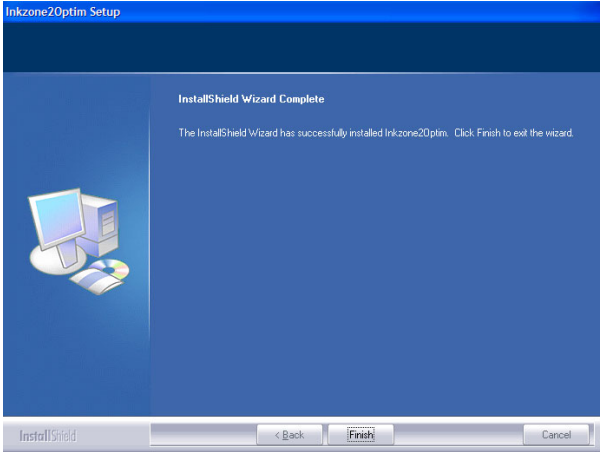
Select the option you would like to install and click Next.



Select the Program folder and click Next

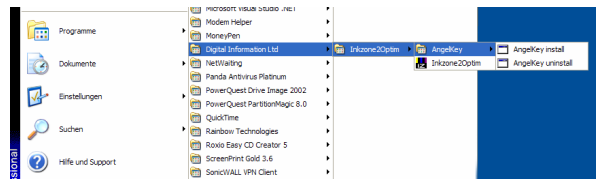


The installer has successfully installed Inkzone2Optim on your computer. Click Next to finish the installer.

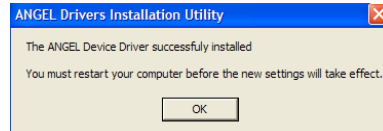


1.3 Dongle installation

Before you attach the USB dongle to your system, you have to run the dongle installer. Go to the Windows start menu and start the installer by clicking on Start, programs, Digital Information, Angel key.



Click on AngelKey install. To finish the dongle installation, click OK and restart the PC. You can now attach the USB dongle.



2.1 How it works

The InkzoneBox allows to use three different calibration curves for each press. This curves are used to preset the press for different papers or inks or the combination of them. The calibration can be done directly in the InkzoneBox by changing the curve parameters. For making small adjustment this works fine. Refer to the InkzoneBox manual for more details.

The windows application Inkzone2Optim allows you to create the optimal curve parameter setting by using a graphic interface. First you will need to collect data from the press, data from the prepress and the current settings from the InkzoneBox.

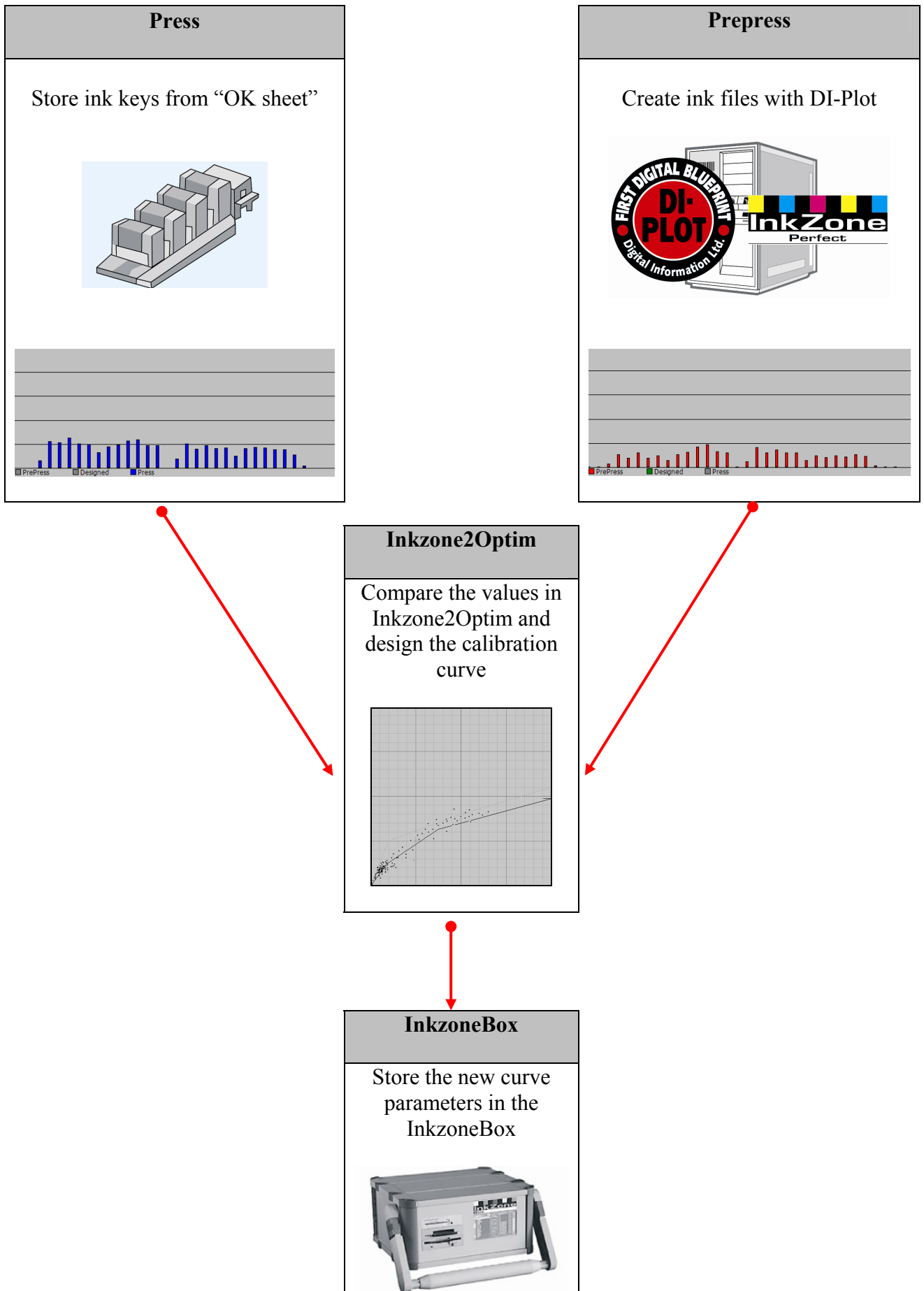
Press data Save the ink key settings from the reference sheet (OK sheet) to the job card. Depending on the press this could be a flash card, chip card, floppy diskette etc.. The job will hold for the ink key setting for each color and ink key.

Important: Collect only jobs which have been printed with the standard density and standard press settings. Don't use Jobs which are not in the range of "Standard".

Prepress data Send the jobs from which you have saved the reference sheet data to the DI-Plot. This will create an ink file which represents the ink coverage for each color and ink key.

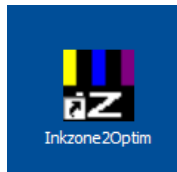
InkzoneBox data The configuration file press.ini stores the paper curve settings and the names.

2.2 Overview



3.1 Start the Software

Start the software by clicking on the shortcut on the desktop.



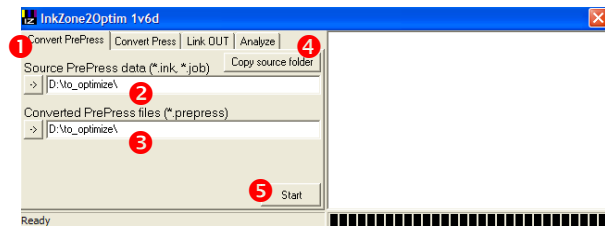
3.2 Tab Convert PrePress

Inkzone2Optim opens with the tab **Convert PrePress** ❶. Locate the **source directory** ❷ where the ink files from the prepress have been copied to.

Select a **destination directory** ❸ where the converted prepress files will be copied to.

The button **Copy source folder** ❹ sets the directory path from the entry **Source Prepress data (*.ink, *.job)** ❷ to the input path setting of the tab **Convert Press** and **Link OUT**.

Click on **Start** ❺ converts all ink files in the source directory into an intermediate format for the usage in Inkzone2Optim.



3.3 Tab Convert Press

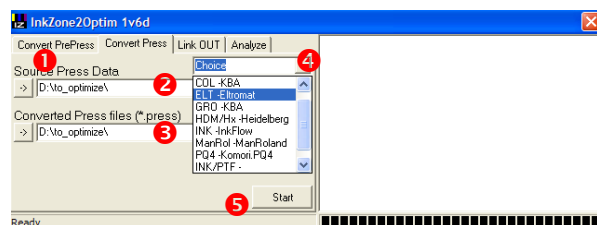
In the tab **Convert Press** ❶ locate the **source directory** ❷ where the press data has been copied to.

To obtain the press data, you have to run the **Add to Optim** function in the InkzoneBox.

Select a **destination directory** ❸ where the converted press files will be copied to.

Select in the **drop down list** ❹ your press format.

Click on **Start** ❺ converts all ink files in the source directory into an intermediate format for the usage in Inkzone2Optim.



3.4 Tab Link OUT

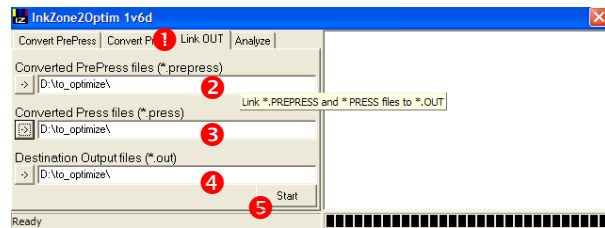
In the tab **Link OUT** ① the converted prepress and press data will be linked to an intermediate Inkzone2Optim format with the extension .out.

Select the **source directory Prepress** ② from the converted prepress data.

Select the **source directory Press** ③ from the converted prepress data.

Select a **destination directory** ④ where the linked files will be copied to.

Click on **Start** ⑤ converts all ink files in the source directory into an intermediate format for the usage in Inkzone2Optim.



3.5 Tab Analyze

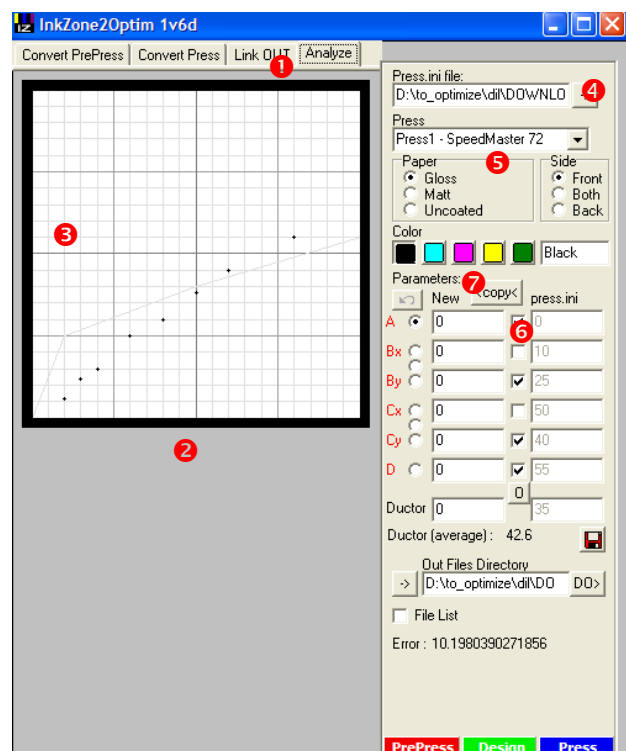
In the tab **Analyze** ① the input data from the press is compared with the input data from the prepress. One dot is representing exactly one value from one particular ink zone and color.

The horizontal **x axis** ② represents the value from prepress. The vertical **y axis** ③ represents the value from the press.

Locate the source directory for the **Press.ini** ④ file which holds the configuration of the presses and their calibration curve values. The press.ini file is collected when the function **Add to Optim** is used on the InkzoneBox.

Select the **Press** ⑤, the **Paper** curve and the **Color** which you like to analyze/optimize.

On the right side of the **Parameters** ⑥ section are the current calibration curve values from the InkzoneBox. The left side of **Parameters** ⑥ represents the new calibration curve values. Click on **Copy** ⑦ to copy all current curve parameter values from the right side to the left side.



To change between the colors Black, Cyan, Magenta, Yellow and Spot us the colored button in the section **Colors** ① . The input data from the press is compared with the input data from the prepress.

The current **Ductor** ② value from the InkzoneBox. The **Average Ductor** ③ values from the loaded jobs. Change them manually by entering here a **New Ductor** value ④ .

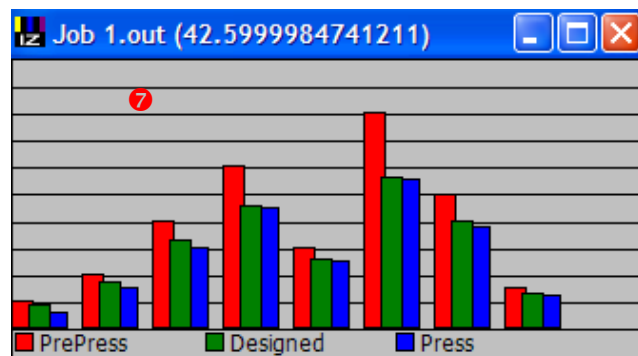
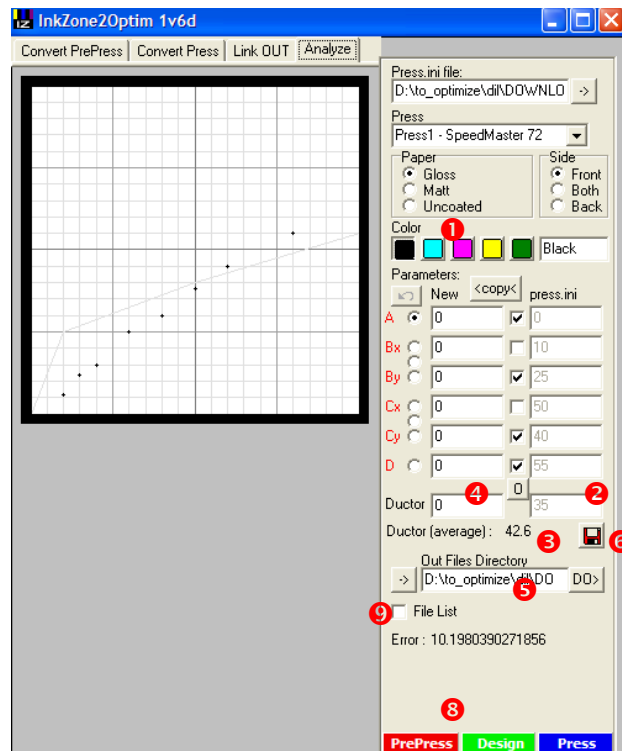
Select the **destination directory** ⑤ for new curve parameter file. Press the **diskette button** ⑥ to save the new parameter file. The file is called update.ini .

To update the InkzoneBox copy the **update.ini** file into the root of the shared directory where the InkzoneBox reads the data for the presses.

In the **Ink Profile View** ⑦ , the bars for Prepress, Design and Press can be switched on/off with the buttons **Prepress**, **Design** and **Press** ⑧ . Each bar represents one ink key setting from one color.

To reach a perfect presetting curve, the green and the blue bars should be as similar as possible.

In the **File List** ⑨ loaded jobs can be selected/deselect for the Ink Profile View and for previewing the dots on the analyze map..



Instructions Manual



Digital Information Ltd. * Technopark Strasse 1, CH-8005 Zurich, Switzerland * Phone +41 1 445 28 70 * Fax +41 1 445 28 79